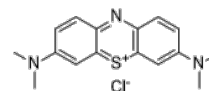


**Product Name** : Methylene Blue  
**Cat. No.** : PC-23175  
**CAS No.** : 61-73-4  
**Molecular Formula** : C<sub>16</sub>H<sub>18</sub>ClN<sub>3</sub>S  
**Molecular Weight** : 319.85  
**Target** : Filovirus  
**Solubility** : 10 mM in DMSO



## Biological Activity

Methylene blue (Basic Blue 9) is a guanylyl cyclase (sGC), monoamine oxidase A (MAO-A) and NO synthase (NOS) inhibitor, also is a Tau aggregation inhibitor, inhibits DENV NS2B-NS3 inhibitor (IC<sub>50</sub>=9 μM) and DENV infection in cells in the submicromolar range (EC<sub>50</sub>=0.36 μM).

## References

- Lorenzo Cavina, et al. *Molecules*. 2024 Aug 27;29(17):4047.  
Klamer D, et, al. *Basic Clin Pharmacol Toxicol*. 2004 Feb;94(2):65-72.  
Fenn AM, et, al. *J Neurotrauma*. 2015 Jan 15;32(2):127-38.

**Caution: Product has not been fully validated for medical applications. Lab Use Only!**

E-mail: tech@probechem.com